



The University of Osaka Graduate School of Medicine/Faculty of Medicine trace their origins to Tekijuku, which provided the highest level of Western medical education in Japan during the late Edo period. Since its establishment, our institution has played a central role in medical education and clinical practice in Japan, producing numerous outstanding professionals. Moreover, we have contributed to the advancement of global medicine through world-class research achievements. While inheriting this rich history and tradition, The University of Osaka Graduate School of Medicine/Faculty of Medicine continues to lead Japanese medical and healthcare fields as a frontier runner, constantly taking on new challenges.

Medical science and healthcare are advancing at an astonishing pace, with new discoveries emerging daily. However, despite these advancements, the causes of many diseases remain unknown, and fundamental treatments are still unavailable. Countless patients and their families worldwide continue to suffer. To address these challenges, The University of Osaka Graduate School of Medicine/Faculty of Medicine is committed to unraveling the causes of such diseases and developing novel therapies. We conduct cutting-edge research across a broad spectrum, from basic and clinical medicine to medical technology innovations, maintaining a leading role on the global stage. Furthermore, at The University of Osaka Hospital and other affiliated institutions, we strive to implement the most advanced medical treatments while ensuring compassionate, patient-centered care.

Education is another pillar of our mission. We place great emphasis on cultivating physicians and healthcare professionals with a global perspective. Our goal is to nurture individuals who possess both scientific reasoning and ethical awareness, ensuring they can adapt to the continuous progress of medicine. Additionally, we actively collaborate with universities and research institutions worldwide to foster diversity and train medical professionals capable of making meaningful contributions to international society.

Under the philosophy of “contributing to human health and welfare through scientific and technological innovation,” The University of Osaka Graduate School of Medicine/Faculty of Medicine will continue to push the boundaries of medical science and healthcare. We look forward to working together with all of you to shape the future of medicine.

M.D., Ph.D. Masaru ISHII

## From root learning to communication

Inheriting the free and open academic character and fundamental forward-looking spirit of its predecessor Tekijuku, founded in Osaka by OGATA Koan, the Graduate School of Medicine/Faculty of Medicine, The University of Osaka has contributed to society and to the development of medicine in Japan and around the world, while also undergoing a number of changes in name.

In the future as well, it will continue to play a leading role in world medicine as it ceaselessly communicates information on new medical science.



1838



1849



1869



1879

### OGATA Koan

OGATA Koan was revered during the closing days of the Tokugawa Shogunate as a leading Western-style doctor and educator on Western science through the Dutch language. Together with translating numerous Western works in order to introduce the latest medical knowledge to Japan, he also authored a number of works himself. Of these, the publication of his translation of *Enchiridion medicum, or, the practice of medicine* (30 volumes) was his life’s work. This was a secondhand translation into Japanese of the Dutch translation of German doctor Christoph Wilhelm Hufeland’s summation of his 50 years of experience as a physician. It contributed greatly to the advancement of internal medicine in Japan.



1915



1931



1993



2019

### Tekijuku <Historical landmark & important cultural asset >

Tekijuku was a school of Western science through the Dutch language founded in Osaka in 1838 by OGATA Koan. While teaching advanced Western subjects such as medicine and pathology, it also strived to promote and improve medicine through means including publishing guidelines for treatment of infectious diseases such as cholera, which was prevalent at the time. Students who studied under Koan, who was both a doctor and an outstanding educator, later served as a driving force behind Japan’s modernization during the Meiji Period. Tekijuku graduated numerous exceptional talents including NAGAYO Sensai and FUKUZAWA Yukichi.

### Jotokan

Koan established this facility together with doctors HINO Katsumin and YAMATOYA Kihei, among others, in Osaka’s Doshomachi in 1849, when smallpox was introduced to Japan, as a base for promoting natural prevention of smallpox. Use in Japan of the cowpox vaccine, developed in 1796 by the English doctor Edward Jenner, began at this facility (renamed Shutokan in 1870).

# Overview

## Years serve by Dean

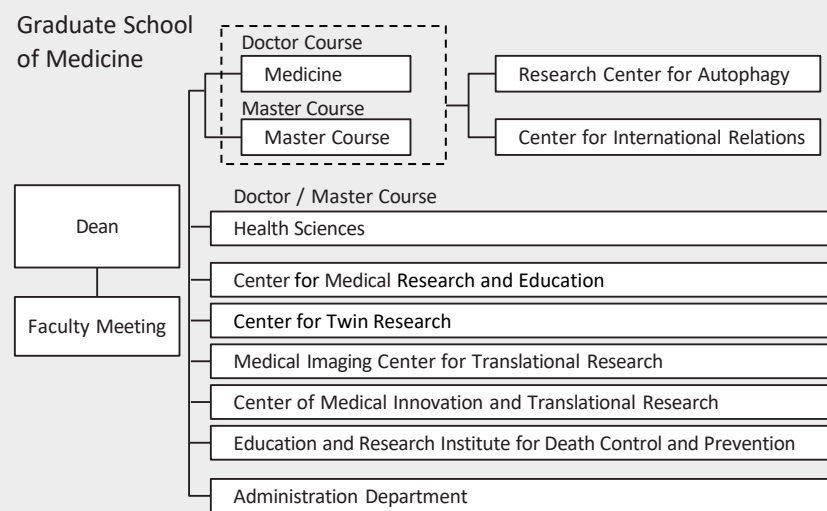
Name	Tterm of office	Name	Tterm of office
KUSUMOTO Chozaburo	May 1, 1931 – June 22, 1934 ▶ Appointed in June 1934, as the 2nd President	YAMAMURA Yuichi	March 1, 1979 – August 25, 1979 ▶ Appointed in August 1979 as the 11th President
OZAWA Syuzo	June 22, 1934 – June 21, 1937	IWAMA Kichiya	August 26, 1979 – August 25, 1981
KOTAKE Yashiro	June 22, 1937 – June 22, 1940	SAKAMOTO Yukiya	August 26, 1981 – August 25, 1985
SATANI Yukichi	June 22, 1940 – June 26, 1943	TANAKA Takehiko	August 26, 1985 – August 25, 1987
TAKAGI Kozo	June 26, 1943 – June 25, 1946	MATSUMOTO Keishi	August 26, 1987 – August 25, 1991
OKAGAWA Masayuki	June 25, 1946 – November 17, 1946	ONO Keiro	August 26, 1991 – August 25, 1993
YOSHIMATSU Nobutaka	November 17, 1946 – December 28, 1948 Acting President from November 17, 1946 to December 28, 1946	HAMAOKA Toshiyuki	August 26, 1993 – August 25, 1995
KUROTOU Toshiyuki	December 28, 1948 – April 30, 1951	KISHIMOTO Tadamitsu	August 26, 1995 – August 25, 1997 ▶ Appointed in August 1997 as the 14th President
TANIGUCHI Tenji	April 30, 1951 – March 31, 1952	KITAMURA Yukihiro	August 26, 1997 – August 25, 1999
KAJIHARA Saburo	April 1, 1952 – March 31, 1956	OCHI Takahiro	August 26, 1999 – August 25, 2001
OMURA Tokuzo	April 1, 1956 – March 31, 1958	YAMANISHI Koichi	August 26, 2001 – March 31, 2005
ICHIHARA Katashi	April 1, 1958 – January 15, 1960	TOYAMA Masaya	April 1, 2005 – March 31, 2008
NISHIZAWA Yoshito	January 15, 1960 – January 14, 1962	HIRANO Toshio	April 1, 2008 – March 31, 2011 ▶ Appointed in August 2011 as the 17th President
IMAZUMI Reiji	January 15, 1962 – March 31, 1967	YONEDA Yoshihiro	April 1, 2011 – March 31, 2013
YAMAMURA Yuichi	April 1, 1967 – March 31, 1969	KANEDA Yasufumi	April 1, 2013 – March 31, 2015
BAN Tadayasu	April 1, 1969 – March 31, 1971	SAWA Yoshiki	April 1, 2015 – March 31, 2017
SEKI Teishiro	April 1, 1971 – March 31, 1973	KANEDA Yasufumi	April 1, 2017 – March 31, 2019
CHUMA Ichiro	April 1, 1973 – February 28, 1975	MORII Eiichi	April 1, 2019 – March 31, 2021
AMANO Tsunehisa	March 1, 1975 – February 28, 1977	KUMANOGOH Atsushi	April 1, 2021 – March 31, 2025 ▶ Appointed in April 2025 as the 19th President
YAMANO Toshio	March 1, 1977 – February 28, 1979	ISHII Masaru	April 1, 2025 –

### Administration

Dean	ISHII Masaru
Associate Dean	KISHIMA Haruhiko
Associate Dean	TSUMAKI Noriyuki
Associate Dean	SHINTANI Yasushi
Associate Dean	ISHIDA Takayuki
Advisor to the Dean	OKADA Seiji
Advisor to the Dean	KAWASAKI Ryo
Advisor to the Dean	HIBINO Hiroshi

### Organization

#### The University of Osaka



# International Prize

#### Crafoord Prize 3 recipients

KISHIMOTO Tadamitsu

HIRANO Toshio

<Year 2009>

Achievement

Pioneering work to isolate interleukins, determine their properties and explore their role in the onset of inflammatory diseases.

SAKAGUCHI Shimon

<Year 2017>

Achievement

Discoveries relating to regulatory T cells, which counteract harmful immune reactions in arthritis and other autoimmune diseases.



#### Gairdner International Award 2 recipients



AKIRA Shizuo

<Year 2011>

Achievement

The discovery of proteins playing a key role in innate immunity.

SAKAGUCHI Shimon

<Year 2015>

Achievement

The discovery of regulatory T cells, characterization of their role in immunity and application to the treatment of autoimmune diseases and cancer.

#### Robert Koch Award 6 recipients



TANIGUCHI Tadatsugu

<Year 1991>

AKIRA Shizuo

<Year 2004>

NAGATA Shigekazu

<Year 1995>

HONJO Tasuku

<Year 2012>

Robert Koch Gold Medal

KISHIMOTO Tadamitsu

<Year 2003>

SAKAGUCHI Shimon

<Year 2020>

#### Japan Prize 2 recipients



KISHIMOTO Tadamitsu

HIRANO Toshio

<Year 2011>

Achievement

The discovery of interleukin-6 and its application in treating diseases.

#### Wolf Prize 1 recipient



HAYAISHI Osamu

<Year 1986>

Achievement

The discovery of the oxygenase enzymes and elucidation of their structure and biological importance.



# Faculty and Faculty Members

## Division of Medicine

(As of July 1, 2025)

Department	Research Field	Chief
Department of Anatomy	Neuroscience and Cell Biology	Prof. SHIMADA Shoichi
	Anatomy and Neuroscience	
	Cell Biology	Prof. HARADA Akihiro
	Molecular Neuroscience	Prof. YAMASHITA Toshihide
Department of Physiology	Brain Physiology	Prof. KITAZAWA Shigeru
	Integrative Physiology	Prof. OKAMURA Yasushi
Department of Biochemistry and Molecular Biology	Medical Biochemistry	Prof. TAKASHIMA Seiji
	Genetics	
	Tissue Biochemistry	Prof. TSUMAKI Noriyuki
Department of Pathology	Histopathology	Prof. MORII Eiichi
	Cancer Pathology	Prof. INOUE Daichi
Department of Pharmacology	Bio-system Pharmacology	
	Division of Glocal Pharmacology	Prof. HIBINO Hiroshi
Department of Social Medicine	Public Health	Prof. KAWASAKI Ryo
	Environmental Medicine and Population Sciences	
	Legal Medicine	Prof. MATSUMOTO Hiroshi
	Biomedical Ethics and Public Policy	Prof. KATO Kazuto
Department of Microbiology and Immunology	Immune Regulation	Prof. TAKEDA Kiyoshi
	Immunology and Cell Biology	Prof. ISHII Masaru
	Stem Cell Biology and Developmental Immunology	Prof. NAGASAWA Takashi
	Innate Immune Systems	Prof. MORO Kazuyo
Department of Genome Biology	RNA Biology and Neuroscience	Prof. KAWAHARA Yukio
	Statistical Genetics	
	Cancer Genome Informatics	Prof. YACHIDA Shinichi
	Germline Genetics	Prof. HAYASHI Katsuhiko
	Division of Stem Cell and Organoid Medicine	Prof. TAKEBE Takanori
Department of	Neuroinformatics	Prof. YANAGISAWA Takufumi
Health and Sport Sciences	Medicine for Sports and Performing Arts	Prof. NAKATA Ken

## Division of Medicine

Department	Research Field	Chief
Department of Internal Medicine	Cardiovascular Medicine	Prof. SAKATA Yasushi
		Prof. SHIMOMURA Iichiro
	Metabolic Medicine	
	Respiratory Medicine and Clinical Immunology	Prof. YAMAMOTO Koichi
	Geriatric and General Medicine	Prof. HOSEN Naoki
	Hematology and Oncology	
	Gastroenterology and Hepatology	Prof. ISAKA Yoshitaka
	Nephrology	
Department of Integrated Medicine	Laboratory Medicine	
	Neurology	Prof. IKEDA Manabu
	Psychiatry	Prof. KITABATAKE Yasuji
	Pediatrics	Prof. FUJIMOTO Manabu
	Dermatology	Prof. HATTORI Satoshi
Department of Radiology	Biomedical Statistics	Prof. TAKEDA Toshihiro
	Medical Informatics	Prof. TOMIYAMA Noriyuki
Department of Surgery	Diagnostic and Interventional Radiology	Prof. OGAWA Kazuhiko
	Radiation Oncology	Prof. MIYAGAWA Shigeru
	Cardiovascular Surgery	Prof. SHINTANI Yasushi
	General Thoracic Surgery	Prof. EGUCHI Hidetoshi
	Gastroenterological Surgery	Prof. DOKI Yuichiro
Department of Acute Critical Medicine	Gastroenterological Surgery	Prof. SHIMAZU Kenzo
	Breast and Endocrine Surgery	
Department of Organ Regulation Medicine	Pediatric Surgery	Prof. YOSHIDA Takeshi
	Anesthesiology and Intensive Care Medicine	
	Traumatology and Acute Critical Medicine	Prof. ODA Jun
	Orthopaedic Surgery	Prof. OKADA Seiji
Department of Neural and Sensory Organ Surgery	Obstetrics and Gynecology	Prof. KODAMA Michiko
	Urology	Prof. NONOMURA Norio
	Plastic Surgery	Prof. KUBO Tateki
Department of Neural and Sensory Organ Surgery	Ophthalmology	Prof. NISHIDA Kohji
	Otorhinolaryngology-Head and Neck Surgery	Prof. INOHARA Hidenori
	Neurosurgery	Prof. KISHIMA Haruhiko

Collaborating

Collaborating	Department	Research Field	Chief
Specific Chair	Global and Innovative Medicine		
Special Collaborating Institutes	Department of Pharmaceutical Information	Hospital Pharmacy	Prof. OKUDA Masahiro
	Department of Infection Control and Prevention	Infection Control and Prevention	Prof. KUTSUNA Satoshi
Collaborating Institutes	Departmet of Integral Function	Integral Function	Institute for Protein Research, United Graduate School of Child Development
		Laboratory Animal Science	Institute of Experimental Animal Sciences
	Department of Host Defense	Host Defense	Research Institute for Microbial Diseases, Immunology Frontier Research Center, Center for Infectious Disease Education and Research, Center for Advanced Modalities and DDS, WPI Premium Research Institute for Human Metaverse Medicine
	Department of Health Promotion Medicine	Health Promotion Medicine	Health and Counseling Center

Affiliate Graduate School

Department	Chief
Department of Pediatric and Neonatal-Perinatal Research	Osaka Women's and Children's Hospital
Department of Oncology	Osaka Prefectural Hospital Organization Osaka International Cancer Institute
Department of Molecular Oncology	Osaka Prefectural Hospital Organization Osaka International Cancer Institute
Department of Molecular Imaging in Cardiovascular Medicine	National Cerebral and Cardiovascular Center
Department of Cardiovascular science	National Cerebral and Cardiovascular Center
Department of Cardiovascular Pathophysiology and Therapeutics	National Cerebral and Cardiovascular Center
Department of Development and Regeneration	RIKEN Center for Biosystems Dynamics Research
Department of Systems Biology	RIKEN Center for Biosystems Dynamics Research
Department of Allergy and Immunology	RIKEN Center for Integrative Medical Sciences
Department of Cancer, Infection and immunology	Clinical Research Center National Hospital Organization Kinki-Chuo Chest Medical Center
Department of Virology and Immunology	National Institute of Biomedical Innovation, Health and Nutrition

Affiliate Graduate School

Department	Chief
Department of Pathogenesis and Metabolic Control	National Institute of Biomedical Innovation, Health and Nutrition
Department of Integrated Molecular Imaging	National Institutes for Quantum Science and Technology
Department of Regulatory Science	Pharmaceuticals and Medical Devices Agency
Department of Advanced Medicine for HIV infection	Osaka National Hospital
Department of Epidemiology for Infectious Diseases	Japan Institute for Health Security
Department of Innovative Cancer Medicine and Regulatory Science	National Cancer Center
Department of Aging Neurobiology	National Center for Geriatrics and Gerontology
Department of Epidemiology and Health	Osaka Institute of Public Health
Department of Clinical immunopathology	National Hospital Organization Osaka Minami Medical Center

Endowed Chair

Department	Chief
Department of Cancer Immunotherapy	Endowed Chair Associate Prof. FUJIKI Fumihiro
Department of Clinical Gene Therapy	Endowed Chair Prof. MORISHITA Ryuichi
Department of Orthopedic Biomaterial Science	Endowed Chair Associate Prof. OKA Kunihiro
Department of Orthopaedic Medical Engineering	Endowed Chair Associate Prof. HAMADA Hidetoshi
Department of Stem Cell Therapy Science	Endowed Chair Associate Prof. SAGA Kotaro
Department of Metabolism and Atherosclerosis	Endowed Chair Associate Prof. NISHIZAWA Hitoshi
Department of Stem Cell and Applied Medicine	Endowed Chair Associate Prof. SAKIMOTO Susumu
Department of Diabetes Care Medicine	Endowed Chair Associate Prof. KOZAWA Junji
Department of Health Development and Medicine	Endowed Chair Prof. NAKAGAMI Hironori
Department of Carbon Ion Radiotherapy	Endowed Chair Prof. SHIMIZU Shinichi
Department of Adipose Management	Endowed Chair Associate Prof. FUKUHARA Atsunori
Department of Innovative Visual Science	Endowed Chair Prof. MAENO Takatoshi
Department of Advanced visual neuroscience	Endowed Chair Associate Prof. MORIMOTO Takashi

■ Endowed Chair

Department	Chief
Department of Transformative Analysis for Human Specimen	
Department of Transformative Protection to Infectious Disease	Endowed Chair Associate Prof. SADA Ryuichi
Department of Transformative System for Medical Information	Endowed Chair Associate Prof. FUJII Tomomi
Department of Lifestyle Medicine	Endowed Chair Associate Prof. BADEN Megu
Department of High Precision Image-guided Percutaneous Intervention	Endowed Chair Associate Prof. HIGASHIHARA Hiroki
Department of Gene & Stem Cell Regenerative Therapy	

■ Joint Research Chair

Department	Chief
Department of Immunology and Molecular Medicine	
Department of Frontier Research in Tumor Immunology	Specially Appointed Prof. OHKURA Naganari
Department of Clinical Research in Tumor Immunology	Specially Appointed Associated Prof. SAITO Takuro
Department of Medical Data Science	Specially Appointed Prof. ISHII Hideshi
Department of Ocular Immunology and Regenerative Medicine	Specially Appointed Associate Prof. FUKUSHIMA Yoko
Department of Dvice Application for Molecular Therapeutics (**cii)	Specially Appointed Associate Prof. YAMASHITA Kunihiko
Department of Frontier of Regenerative Medicine (**cii)	Specially Appointed Associate Prof. SASAI Masao
Department of Clinical Genomics	Specially Appointed Associate Prof. TAKIUCHI Tsuyoshi
Department of Thermo-Therapeutics for Vascular Dysfunction (**cii)	Specially Appointed Prof. SHIMA Yoshihito
Department of Future Diagnostic Radiology	Specially Appointed Associate Prof. NAKAMOTO Atsushi
Department of Neuro-Medical Science	Specially Appointed Prof. ITOKAZU Takahide
Department of Biostatistics and Data Science	Specially Appointed Prof. HIDA Eisuke
Department of Stem Cell Gene Therapy Science	Specially Appointed Associate Prof. KIKUCHI Yasushi
Department of Sports Medical Science(**cii)	Specially Appointed Prof. TANAKA Hiroyuki
Department of Sports Medical Biomechanics(**cii)	Specially Appointed Associate Prof. TSUJII Akira
Department of Artificial Intelligence in Diagnostic Radiology(**cii)	Specially Appointed Prof. HORI Masatoshi

■ Joint Research Chair

Department	Chief
Department of Neural Diagnosis and Restoration	Specially Appointed Prof. HIRATA Masayuki
Department of Advanced Clinical and Translational Immunology	Specially Appointed Prof. NARAZAKI Masashi
Department of DDS Pharmaceutical Development	Specially Appointed Prof. MATSUZAKI Takashi
Department of Triglyceride Science	Specially Appointed Prof. HIRANO Kenichi
Department of Advanced Molecular Therapy	Specially Appointed Prof. TANIYAMA Yoshiaki
Department of Medicine for Cutaneous Immunological Diseases	Specially Appointed Associate Prof. ISHITSUKA Yousuke
Department of Cutaneous Immunology and Microbiology	Specially Appointed Associate Prof. NAKAGAWA Seitaro
Department of Post-COVID-19 condition	Specially Appointed Associate Prof. ONOZUKA Daisuke
Department of Vision Informatics	Specially Appointed Associate Prof. MARUYAMA Kazuichi
Department of Advanced Device Medicine	Specially Appointed Prof. BABA Koichi
Department of Cardiovascular Surgical Technology Innovation	Specially Appointed Associate Prof. YAMAUCHI Takashi

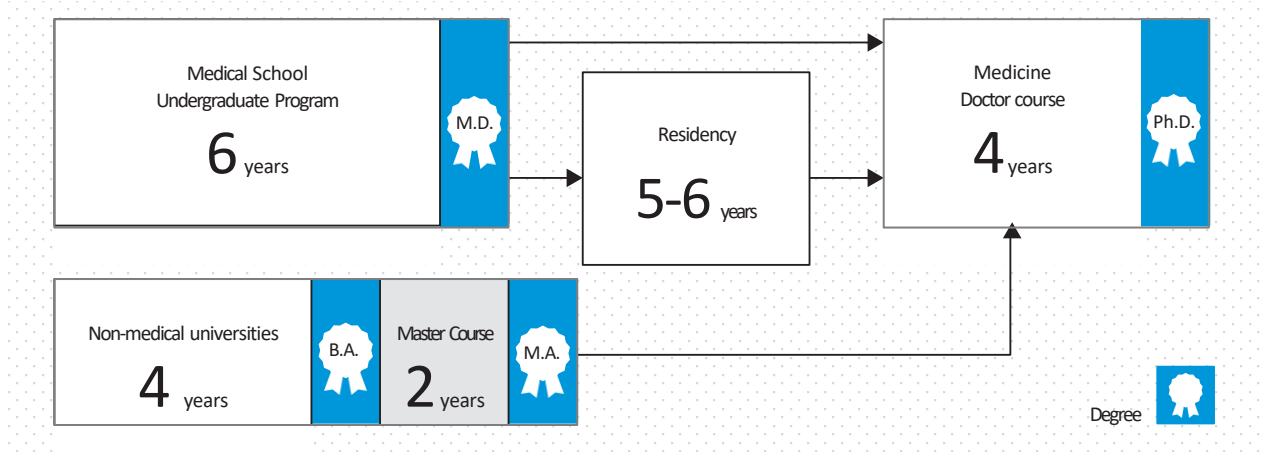
\*\*cii ・ ・ ・ Strategic Global Partnership & Cross-Innovation Initiative

■ Center and Institute

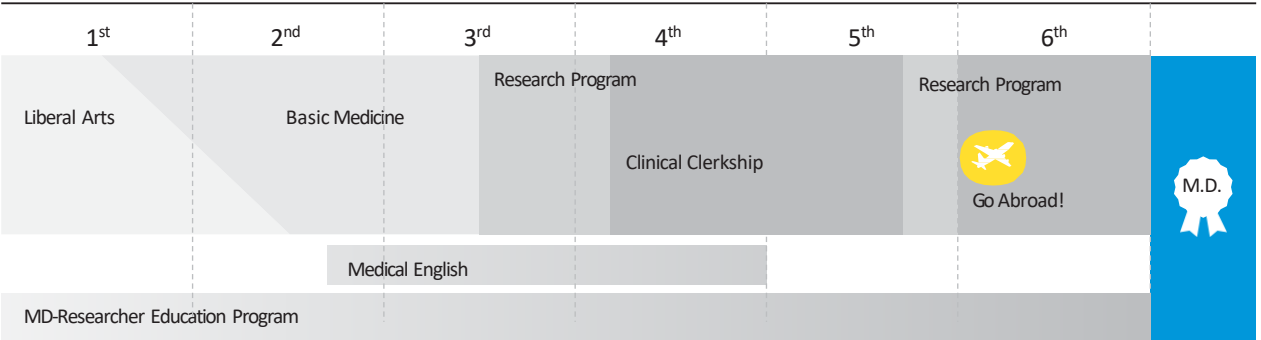
Center and Institute	Chief
Center for Medical Research and Education	Director (a.p.) HIBINO Hiroshi
Medical Imaging Center for Translational Research	Director(a.p.) TOMIYAMA Noriyuki
Center of Medical Innovation and Translational Research	Director(a.p.) FUJIMOTO Manabu
Education and Research Institute for Death Control and Prevention	Director(a.p.) MATSUMOTO Hiroshi
Institute of Experimental Animal Sciences	Director ・ Prof. NAKAO Kazuki
Medical Education Center	Director ・ Prof. WATABE Kenji
Center for International Relations	Director(a.p.) MORII Eiichi
Research Center for Autophagy	Director(a.p.) ISAKA Yoshitaka

# Medical Education

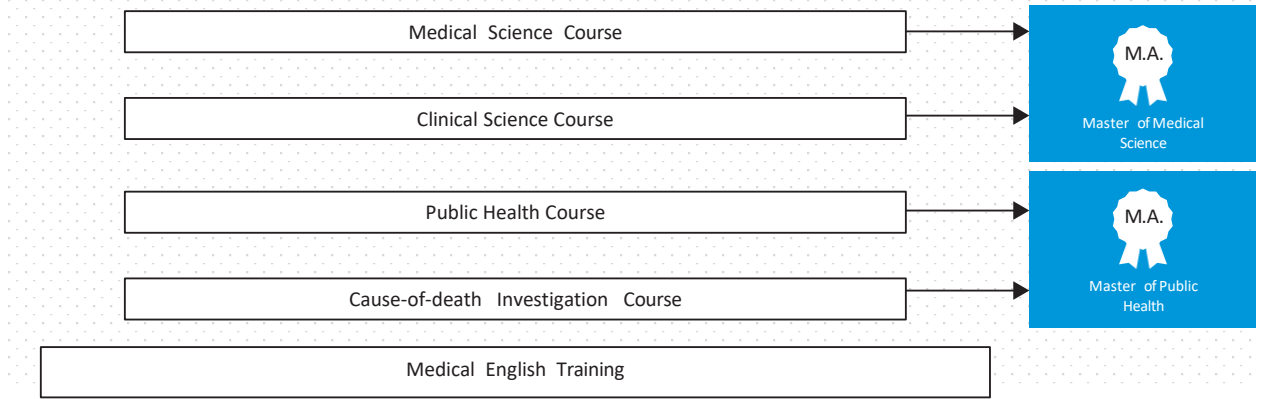
To educate global perspectives to our undergraduate students, we have started medical English courses and encouraged them to participate in studying abroad. The Medical Doctor Scientist Program is designed to educate students with skills and knowledge necessary for basic medical researchers. For master course students, we have also started a new Clinical Science Course and redesigned our Public Health Course so that students gain a strong background for careers in bioinformatics, sports medicine, medical statistics, etc. Graduates will earn a master's degree in medical science or public health. In the doctor course, we aim to train world leaders for medical research and patient care.



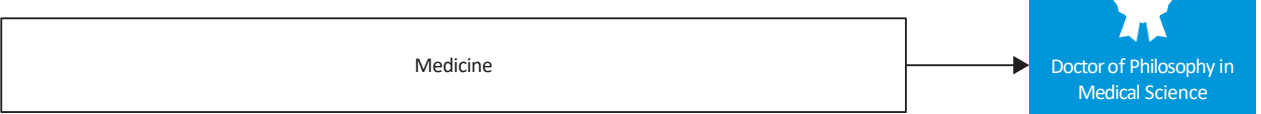
## Medical School, Undergraduate Program (6 years)



## Master Course ( 2 years )



## Doctor Course ( 4 years )



# Number of Staff and Students

As of May 1, 2025 (Unit: person)

## Full-Time Staff

(Medical School)

931

## Part-Time Staff

(Medical School)

381

## Undergraduate Students

(Medical School)

652

## Graduate Students

(Medical Sciences)

45

## Graduate Students

(Medicine)

769



## Actual results of 2025 Entrance Examination (Undergraduate)

(Enrolled in Apr, 2025)

School	Quotas	Applicants	Entrants
Medical School	98	296	100

## Undergraduates enrolled as non-first-year student

(Enrolled in Apr, 2025)

School	Quotas	Applicants	Entrants
Medical School	10	84	10

## Actual results of 2025 Entrance Examination (Graduate School)

(Enrolled in Apr, 2025)

Division	Master Course		
	Quotas	Applicants	Entrants
Medical Sciences	20	44	24

Division	Doctor Course		
	Quotas	Applicants	Entrants
Medicine	172	199	166

## Degrees Awarded

(Completed in March, 2025)

Division	Master's Degree
Medical Sciences	27

(Academic Year, 2024)

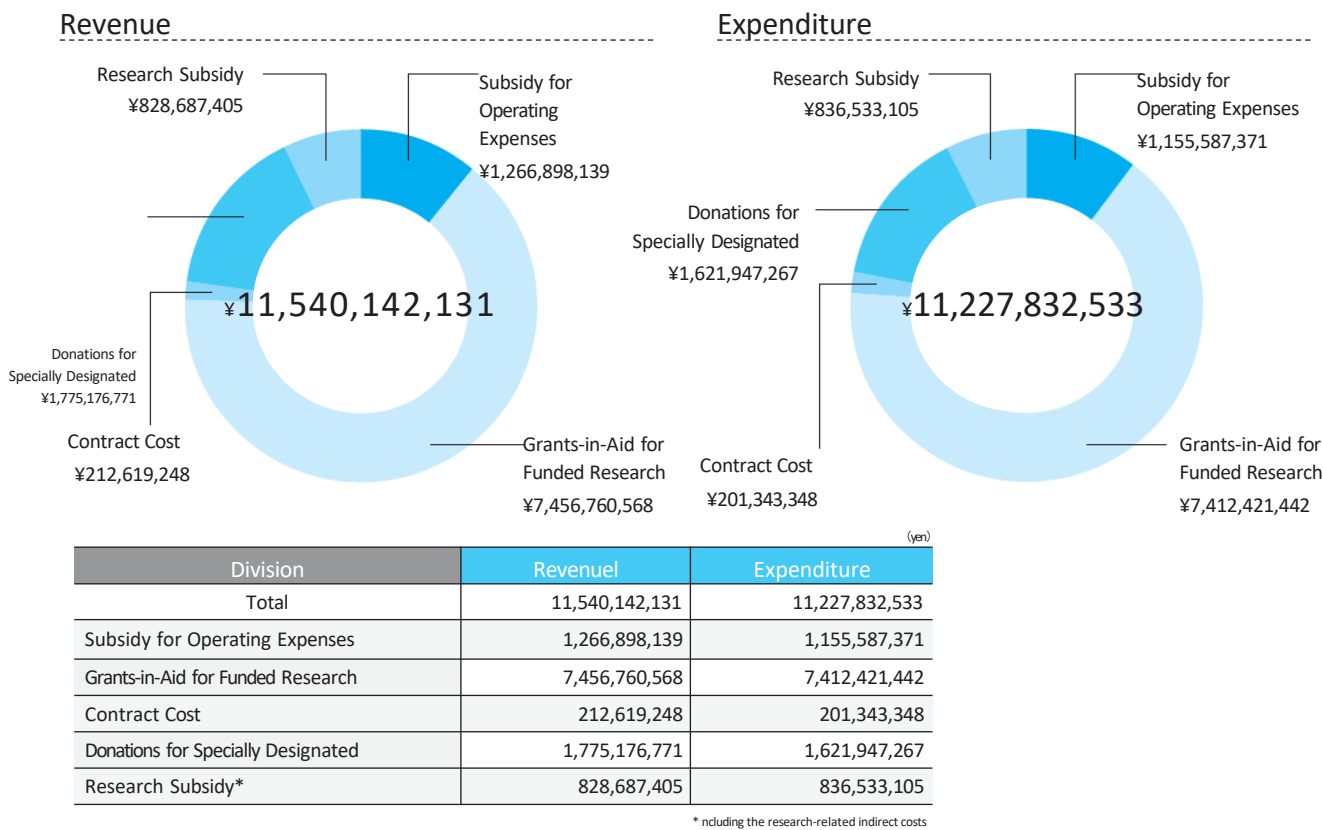
Division	Doctoral Dissertation		
	Course-Based*	Thesis Only**	Total
Medicine	157	15	172

\* Ph.D. obtained by completing the doctor course  
\*\* Ph.D. obtained by passing thesis examination only



# Accounting

Medical School / School of Allied Health Sciences (2024)



## 2024 Grants in Aid for Scientific Research (KAKENHI)

Classification	Number of cases	Amount
Total	794	1,634,850,568
Grant-in-Aid for Specially Promoted Research	0	0
Grant-in-Aid for Scientific Research on Innovative Areas	0	0
Grant-in-Aid for Transformative Research Areas(A)	10	65,260,000
Grant-in-Aid for Transformative Research Areas(B)	2	14,430,000
Grant-in-Aid for Transformative Research Areas (Platforms for Advanced Technologies and Research Resources)	5	13,863,200
Grant-in-Aid for Scientific Research(S)	4	120,770,000
Grant-in-Aid for Scientific Research(A)	17	82,160,000
Grant-in-Aid for Scientific Research(B)	106	355,073,160
Grant-in-Aid for Scientific Research(C)	384	397,878,000
Grants-in-Aid for Challenging Research (Pioneering)	7	35,295,000
Grants-in-Aid for Challenging Research (Exploratory)	33	56,615,000
Grant-in-Aid for Early-Career Scientists	164	215,746,208
Grant-in-Aid for Research Activity Start-up	30	37,570,000
Grant-in-Aid for JSPS Fellows	25	28,030,000
Fund for the Promotion of Joint International Research (International Leading Research)	2	195,000,000
Fund for the Promotion of Joint International Research (International Collaborative Research)	2	8,710,000
Fund for the Promotion of Joint International Research (Fostering Joint International Research(A))	0	0
Fund for the Promotion of Joint International Research (Fostering Joint International Research(B))	3	8,450,000

## 2024 Health Labour Sciences Research Grant

Number	Amount
70	183,321,000

## 2024 The number of outside funds

Number	Amount
851	11,164,930,528

## 2024 Number of Patents

Number
154

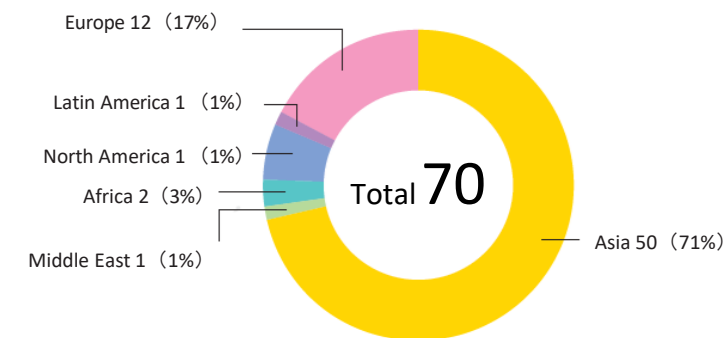
# Student Exchange and International Collaborations

## Student Exchange

	Undergrad uate	Master Cou rse	Doctor Cou rse	Research St udent	Total
International Regular Students (As of May 1, 2025)	1	8	133	1	143
Students Studying Abroad (Academic Year, 2024)	49	0	22	0	71

## Number of International Researchers ( Academic Year, 2024 )

Unit: people



## Inter-Faculty Academic Exchange Agreement (As of May 1, 2025)

area	Partner Institutions	area	Partner Institutions
Asia	All India Institute of Medical Sciences, India	Oceania	Faculty of Medicine, Nursing and Health Sciences, Monash University, Australia *
	Faculty of Medicine, Airlangga University, Indonesia *	Europe	Bart's and the London School of Medicine & Dentistry, Queen Mary University of London, United Kingdom
	Graduate School of Public Health,Seoul National University, Korea *		King's College London Faculty of Life Sciences and Medicine and Institute of Psychiatry, Psychology & Neuroscience, United Kingdom *
	College of Medicine, Yonsei University, Korea *		University of Oxford, United Kingdom
	Faculty of Medicine Ramathibodi Hospital, Mahidol University, Thailand *		University Medical Center Groningen, Faculty of Medical Sciences, University of Groningen, Netherlands *
	Faculty of Tropical Medicine, Mahidol University, Thailand *		Karolinska Institutet, Sweden *
	Faculty of Medicine Siriraj Hospital Mahidol University, Thailand *		Faculty of Medicine, Heinrich Heine University Düsseldorf, Germany *
	Queen Sirikit National Institute of Child Health, Thailand		Sorbonne Université, France *
	Department of Medical Services, Ministry of Public Health, Thailand *	Middle East	College of Medicine & Health Sciences, United Arab Emirates University, UAE
	College of Medicine, National Taiwan University, Taiwan *	others	International Atomic Energy Agency <Consortium> ※
	College of Medicine, Taipei Medical University, Taiwan		
	Peking University Health Science Center, China *		
	School of Public Health, Peking University, China *		
	School of Life Sciences,Tsinghua University, China *		
	School of Medicine,Tsinghua University, China *		
	Vanke School of Public Health, Tsinghua University, China *		
	School of Medicine, Shanghai Jiao Tong University, China *		
	Tianjin University of Traditional Chinese Medicine, China		
	Shanghai Advanced Research Institute, Chinese Academy of Sciences, China		
	Guangdong Pharmaceutical University, China		
	Faculty of Medicine, The Chinese University of Hong Kong, Hong Kong SAR, China (Hong Kong) *		
	Universiti Malaysia Sarawak, Malaysia		

※ Including some items that are in the process of being updated

\*Also,with the inter-university exchange agreement

※Although the interdepartmental exchange agreement with the International Atomic Energy Agency has been terminated, participation in the multi-agency consortium remains ongoing.

# Systematical Anatomy

## Number of Cadavers Used

Division	2016	2017	2018	2019	2020	2021	2022	2023	2024
Total	51	48	55	56	51	47	47	40	48

# Institutions

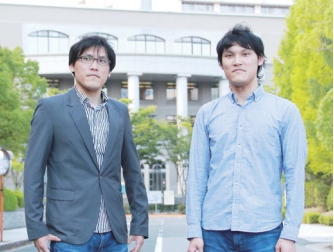
## 1 Center for Medical Research and Education

The Center for Medical Research and Education was established to support the effective shared use of advanced equipment in medical science. Its academic and technical staff actively provide expert assistance for both research and student education. The Center operates shared facilities, including P2 and P3 laboratories as well as a liquid nitrogen storage facility, and offers a range of analytical services such as cell sorting, microchip electrophoresis, and sample preparation for electron microscopy. It also supports genome editing in collaboration with the Institute of Experimental Animal Sciences.



## 2 Center for Twin Research

Established in 2009 as Japan's first research institute dedicated to twin studies, our center conducts collaborative research with domestic institutions and leading international organizations. Our mission is to advance health sciences by rigorously investigating the interplay between genetic and environmental factors. By engaging in interdisciplinary research that spans education, behavioral science, psychology, and the social sciences, we strive to deepen understanding of the genetic and environmental determinants of health. Ultimately, our goal is to foster collaborative research that promotes the development of healthy minds, bodies, and emotional well-being.



## 3 Medical Imaging Center for Translational Research

Equipped with a cyclotron, radiotracer synthesis equipment, a facility for raising animals, and animal Positron Emission Tomography (PET) cameras, this Center is capable of imaging of molecular behavior inside the living bodies of disease model animals and genetically modified animals and analyzing medical conditions at a molecular level. It also researches basic molecular imaging technologies such as those used in pharmacokinetics of candidate compounds in new drug development and pharmacometrics.



## 4 The Center of Medical Innovation and Translational Research (CoMIT)

This is an R&D facility based on industry-academy-government alliance aiming to develop advanced medical technologies and innovative new medicines through the fusing of research from across differing fields. The primary research fields of the CoMIT are immunology and regenerative medicine, in which The University of Osaka has played a leading role, and the integration of these two fields.

This center aims to promote open innovation and accelerate industrialization of research results while deepening cooperation with diverse companies and institutions both on and off campus.



## 5 Education and Research Institute for Death Control and Prevention

It is the world's first center for education and research in the cause-of-death investigation processes and consists of three divisions. The Human Resource Development Division is responsible for enhancing and updating educational programs in the cause-of-death investigation and developing new programs in response to social needs. The Social and Public Policy Division builds and collaborates with educational networks with other universities and performs management tasks for regional and/or global collaboration. The Advanced Data Science Division analyzes the data by introducing cutting-edge technologies, constructs databases in cooperation with partner universities, and examines ethical and/or legal guidelines for the use of resources.



## 6 Institute of Experimental Animal Sciences

We operate our laboratory animal facilities strictly in accordance with internationally recognized guidelines for the care and use of research animals.

By generating genome-edited animals and maintaining a broad spectrum of disease models, we enable cutting-edge biomedical research to decipher disease pathophysiology and develop novel therapies for intractable disorders.



## 7 The University of Osaka Hospital



Consultation times:  
\*First-time visitors to The University of Osaka Hospital must have a referral from a physician.  
First visit 8:30 am to 11:00 am  
Revisit 8:30 am to 11:30 am  
Revisit with appointment 8:30 am to 3:00 pm  
Non-consultation days: Saturdays, Sundays, Holidays New Year's  
Holidays: Dec. 29 to Jan. 3  
Number of beds: 1,086

### Guide for Visitors

Department of Medicine	Cardiovascular Medicine/Nephrology/Gastroenterology and Hepatology/Metabolic Medicine/Respiratory Medicine/Clinical Immunology/Hematology and Oncology/Geriatrics and Hypertension/General Medicine/Infectious Diseases
Department of Surgery	Cardiovascular Surgery/General Thoracic Surgery/Gastroenterological Surgery/Breast and Endocrine Surgery/Pediatric Surgery/Department of Diagnostic Pathology
Department of Sensory, Cutaneous and Motor Organ Medicine	Ophthalmology/Otorhinolaryngology-Head and Neck Surgery/Orthopaedic Surgery/Dermatology/Plastic Surgery/Rehabilitation Medicine
Department of Clinical Neuroscience	Neurology/Neuropsychiatry/Neurosurgery/Anesthesiology
Department of Woman, Child Health and Urology	Obstetrics & Gynecology/Pediatrics/Urology
Department of Radiology	Diagnostic and Interventional Radiology/Radiotherapy/Nuclear Medicine
Department of Acute Medicine and Intensive Care Medicine	Intensive Care Medicine/Emergency and Critical Care Medicine
Unit of Dentistry	Dentistry

### Number of patient (2024)

Total Number of Inpatients (Unit: person)	326,007
Average Number of Inpatients per Day (Unit: person)	893.2
Total Number of Outpatients (Unit: Person)	565,037
Average Number of Outpatients per Day (Unit: person)	2,325.26

## 8 Icho Kaikan

First floor: Medical History Museum etc.  
Second floor: Igaku Shinko Ichokai, Osaka Eye Bank, Restaurant Minerva, Icho Club  
Third floor: Hankyu Corporation-Sanwa Bank Hall (capacity 250 persons), Large Meeting Room (capacity 68 persons), Meeting Room B (capacity 42 persons), Meeting Room C (capacity 36 persons), Small Meeting Room (capacity 5 persons)



## 9 Kishimoto Medical History Museum

The exhibition room is open to the general public, where visitors can learn about the history of The University of Osaka Graduate School of Medicine and see the latest research results.

Exhibition room (1st floor)  
OPEN 9:30 ~ 16:30 Weekdays only



## 10 Tokyo Branch

Center for communication and collection of information in the greater Tokyo area  
Meeting Room 911 (capacity 18 persons) / Meeting Room 912 (capacity 36 persons)  
Meeting Room 913 (capacity 54 persons) / Small Meeting Room (capacity 12 persons)

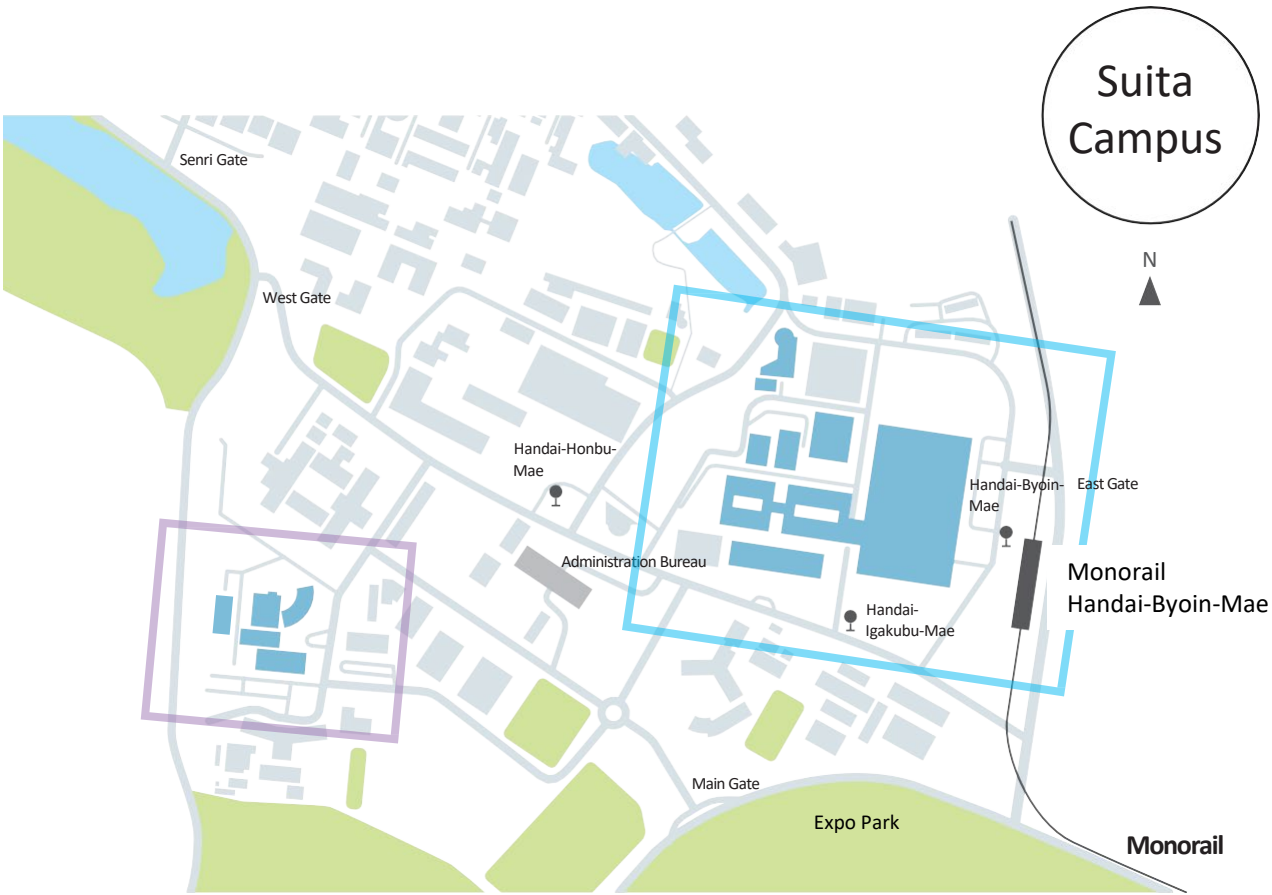
\*Note: A Joint Meeting Room with maximum capacity of 210 persons also is available (at a charge).

Address:  
9F, Nihonbashi Life Science Building, 3-11 Nihonbashihoncho 2-chome, Chuo-ku, Tokyo

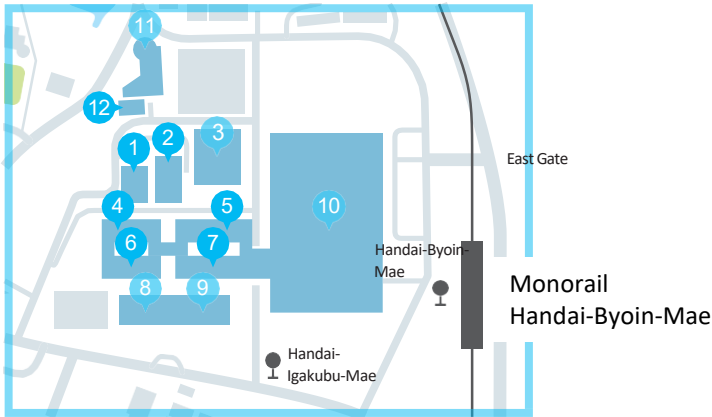




# Access Map



Building Layout



- |   |                                    |
|---|------------------------------------|
| ① Medical Imaging Center for Translational Research       | ⑦ Clinical Research Building       |
| ② Institute of Experimental Animal Sciences               | ⑧ Lecture Building                 |
| ③ Center of Medical Innovation and Translational Research | ⑨ Administration Building          |
| ④ Center for Medical Research and Education Building      | ⑩ The University of Osaka Hospital |
| ⑤ Biomedical Education Research Building                  | ⑪ Icho Kaikan                      |
| ⑥ Basic Research Building                                 | ⑫ Kishimoto Medical History Museum |